



英屬開曼群島商
基士德科技股份有限公司
臺灣分公司
GSD Technologies Co.,Ltd.
Taiwan Branch



INTELLIGENT WATER MANAGEMENT SYSTEM

智慧水管理系統





遠程監控 Remote monitoring

降低巡檢人員成本

- ▶ 實時監控設備&水質狀態
- ▶ 簡訊及網頁遠程控制設備啓停，提高現場應變能力
- ▶ 分散各地的一體化及多種設備，皆可使用本系統做集中管理

Trim down the cost of human resource as well the time span

- Collection the data and feedback from on site operating apparatus without on site attendance.
- At any time and at any condition of weathers, duty of monitoring and control are effectively being carried out at instant responsive communication.
- Collective and Centralization of data from various site equipments become feasible, easy and relatively less skilled technician required.
- Unmanned attending means reducing the cost of total effectiveness.



異常預警 Early alarm

減少設備維護成本

- ▶ 設備或水質狀態異常時，立即電話及簡訊通知負責人員
- ▶ 設備故障前預先報警，減少損失
- ▶ 專業技服團隊可提供維護諮詢服務

Trim down the Cost of Downtime as well maintenance and repair

- Provide early sign of failure by alerting via mobile phone or others wireless network system.
- Early precaution step and action could be instantly being activated.
- Should there is any contingency danger or untoward incident, it could be immediately to response in advance before it comes costly damage and irrevocable dangerous - Early alert facilitate service team to well prepare and act promptly and not wasting unnecessary time and labor.



自動控制 Automatic control

簡化設定時間 & 人力

- ▶ 簡單易懂的操作界面，無需專人編程，自行設定參數即可使用
- ▶ 多臺設備聯動控制、運行周期控制，時段排程，各種邏輯組合控制，只需簡單設置便可靈活運用

Simple and easy to operate, required no skilled personnel

- Built with informative interface and step which require direct to browse.
- Multiple layer of interface provide in depth data and information to enhance and explode upgrading as well improving the operating system.
- Built in customer oriented interface for easy to read and alter. All parameter and functions set up requires no specialist.

系統架構

SYSTEM
STRUCTURE

決策層
Decision-making
layer



雲平臺
Cloud platform

數據分析 | 成本優化 | 節能
Data Analysis | Operation Optimization | Energy Saving

監控層
Monitoring layer



現場監控平臺
On-site monitoring platform

趨勢圖分析 | 遠程監控 | 異常警報
Trend Graph Analysis | Remote Monitoring | Abnormality Alarm

傳輸層
Transmission layer

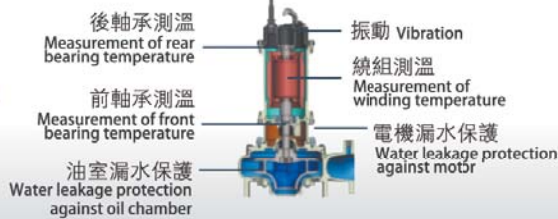
EP6 智能控制器
EP6 intelligent controller



研華ADAM3600 物聯網終端
ADAM3600 IoT Terminal of Advantech

感知層
Perception layer

設備數據
Equipment data



水質數據
Water quality data



設備層
Equipment layer



水泵
Pump



曝氣機
Aerator



風機
Blower



一體化泵站
Integrated pump-station



一體化污水處理設備
Integrated sewage treatment equipment



河道治理
Treatment of river courses

靈活的多場景服務方案

FLEXIBLE MULTI-SCENARIO SERVICE SOLUTION



單機設備管理

- ▶ 實時掌握設備狀態
振動/ 電表/ 軸承溫度/ 繞組溫度/ 漏水感知
- ▶ 設備故障前，報警通知維護
數據異常→即時報警或停機→人員快速維修
- ▶ 專業技術服務團隊，提供設定/ 維護/ 技改/ 優化建議

Management of stand-alone equipment

- ▶ Master equipment status in realtime
Vibration / electric meter/ bearing temperature /winding temperature /water leakage perception.
- ▶ Give an alarm to notify maintenance before equipment failure.
Abnormal data → Immediate alarm or shut down → Rapid maintenance of equipment by specialized personnel.
- ▶ There is a professional technical service team to offer suggestions for setting, maintenance, technical improvement and optimization.



多設備集中管理

- ▶ 快速組建
簡單3 步驟，管理多臺智能設備：
①安裝電腦端管理系統的標準化軟件包
②簡單設定參數
③所有設備的數據及點位名稱自動顯示在網頁
- ▶ 無需專人編寫軟件，省時省力
- ▶ 可與PLC 系統對接，改造現有自控制系統，增加異常報警，遠程監控功能

Centralized management of multiple equipment

- ▶ Quick construction
Only simple 3 steps are needed to achieve management of multiple smart devices:
①Install the standard software package of the computer management system.
②Take simple steps to set parameters.
③Data and site names of all the equipment are automatically displayed on the webpage.
- ▶ There is no need of writing software by a specially-assigned person, saving both time and labor.
- ▶ It can be easily docked to the PLC system, the existing automatic control system is transformed, and the function - abnormality alarm and remote monitoring are increased.



一體化設備管理

- ▶ 無人值守
實現一體化泵站及污水處理設備遠程監控、異常報警，達到無人值守、減少巡檢人員
- ▶ 內建4G模塊
方便管理偏遠地區的設備
- ▶ 新增站點便捷
管理者可自行登錄網頁新增站點，不用專人修改編程，不用校對點位

Management of integrated equipment

- ▶ Unattended operation
Remote monitoring and abnormality alarm of integrated pump stations and sewage treatment equipment are realized, and unattended operation and reduction of inspection personnel are achieved.
- ▶ Built-in 4G module
It is convenient for managing equipment in remote areas.
- ▶ New sites can be added conveniently
Managers can log in the web pages to add new sites, and there is no need to modify programming by a specially-assigned person or proof read sites.



河道水質監控管理

- ▶ 水質連續監測，數據記錄存儲，異常主動報警，自動控制設備等功能
- ▶ 透過趨勢圖分析水質變化狀況
- ▶ 依據水質狀態，聯動設備改善水質
- ▶ 專業環工與技術服務團隊，提供設備選型/ 設定/ 安裝建議

Monitoring and management of the quality of river water




- ▶ There are functions such as continuous monitoring of water quality, data recording and storage, active abnormality alarm and automatic equipment control.
- ▶ Water quality changes are analyzed based on trend graphs.
- ▶ Equipments are linked, so as to improve water quality, according to water status.
- ▶ There is a professional environmental engineering and technical service team to offer suggestions for equipment selection, parameter setting and equipment installation.

方案選擇

SELECTION OF SOLUTIONS

◆ 選擇方案 Select solutions

設備管理 Equipment Management	功能 Functions
<p>智能設備管理 (如水泵 / 風機 / 曝氣機) Intelligent equipment (such as water pump, blower and aerator)</p> <p>(若需設備異常主動報警功能建議採購以下方案) (If you need the function – active alarm for equipment abnormality, the following solution is advised.)</p>	<p>使用前: 沒有設備運行數據 使用後: 設備數據為RS-485, 方便與客戶的PLC或網關對接, 採集數據 Before use: no equipment operation data. After use: equipment data is RS-485, which is convenient for docking with customer PLC or gateway and collecting data.</p>
<p>單機設備管理 (在有線網絡環境) Management of stand-alone equipment (operated in wired network environment)</p>	<p>使用前: 無法遠程監控管理設備 使用後: 使用手機或電腦, 透過EP6網頁及簡訊, 達到異常報警 / 遠程監控管理設備 Before use: unable to monitor and manage equipment remotely. After use: abnormality alarm / remote equipment monitoring and management are realized with a mobile phone or computer through EP6 web pages and SMS.</p>
<p>單機設備管理 (在 4G 傳輸環境) Management of stand-alone equipment (operated in 4G transmission environment)</p>	<p>使用前: 無法遠程監控管理設備 使用後: 使用手機或電腦, 開啓水務設備管理系統網頁, 達到異常報警 / 遠程監控管理設備 Before use: unable to remotely monitor and manage equipment. After use: abnormality alarm/remote equipment monitoring and management are realized with a mobile phone or computer by opening the webpage of the water equipment management system.</p>
<p>多臺設備集中管理 Centralized management of multiple equipment</p>	<p>使用前: 組建耗時長, 需專人客製化編寫軟件或APP、校對傳感器點位名稱數據, 新增點位需專人處理 使用後: 組建快速使用容易, 標準化硬件加標準化軟件為本系統的優勢, 新增點位簡單, 點位名稱數據自動校對, 具備分級管理、遠程監控、異常報警、查詢簽核、趨勢圖分析、數據存儲下載等功能 Before use: it takes a long time to construct, and a specialized person is required to write software or APP in a customized way, proofread sensor site name and data, and new sites are required to be processed by a specialized person. After use: it is quick to construct and easy to use. This system is featured by standard hardware and standard software. It is easy to add sites and site names and data can be proofread automatically. It has the functions such as hierarchical management, remote monitoring, abnormality alarm, inquiry and sign off, trend chart analysis, and data storage and download.</p>

	傳感器 Sensor 	EP6 智慧控制器 EP6 intelligent controller 	水務設備管理系統 (軟件 + 本地伺服器) Water equipment management system (software and local server) 	雲平臺 Cloud platform 
	●			
	●	●		
	●	●	●	選購 Purchasing
	●	●	●	選購 Purchasing

◆ 選擇監測需求 Select monitoring demand

設備監測 Equipment monitoring	
<input type="checkbox"/> 入口壓力 Inlet pressure	<input type="checkbox"/> 前軸承溫度 Front bearing temperature
<input type="checkbox"/> 出口壓力	<input type="checkbox"/> 後軸承溫度
<input type="checkbox"/> 流量 Flow	<input type="checkbox"/> 前軸承振動 Front bearing vibration
<input type="checkbox"/> 智慧電表	<input type="checkbox"/> 後軸承振動
<input type="checkbox"/> 三相電壓 Three-phase voltage	<input type="checkbox"/> 油室內漏水保護 Water leakage protection inside the oil chamber
<input type="checkbox"/> 三相電流	<input type="checkbox"/> 接線盒內漏水保護
<input type="checkbox"/> 輸入功率 Input power	<input type="checkbox"/> 電機內漏水保護 Water leakage protection inside the motor
<input type="checkbox"/> 繞組溫度	<input type="checkbox"/> 其他 (請填寫):

水質監測 Water quality monitoring	
<input type="checkbox"/> WLS-智能水尺傳感器 (水位泥位計)	Water level/ Sludge Sensor
<input type="checkbox"/> SS-懸浮固體濃度傳感器	Suspended Solids Sensor
<input type="checkbox"/> DO-溶解氧傳感器 (電極法)	Dissolved oxygen Sensor
<input type="checkbox"/> TB-濁度傳感器	Turbidimeter Sensor
<input type="checkbox"/> EC-電導度傳感器	EC Monitor
<input type="checkbox"/> PL-投入式液位計	Level Sensor
<input type="checkbox"/> NH3-氨氮傳感器	Ammonia Sensor
<input type="checkbox"/> SC-鹽度傳感器	Salinity sensor
<input type="checkbox"/> NO3-硝酸鹽氮傳感器	Nitra Sensor
<input type="checkbox"/> TDS-總溶解性固體傳感器	Total dissolved solids
<input type="checkbox"/> ORP-氧化還原電位傳感器	ORP Monitor
<input type="checkbox"/> UVDO-溶解氧傳感器 (光學法)	Optical Dissolved oxygen Sensor
<input type="checkbox"/> pH-酸鹼度傳感器	PH Monitor
<input type="checkbox"/> F-氟離子傳感器	Fluoride Sensor
<input type="checkbox"/> 其他 (請填寫):	Others (please complete):

◆ 選擇服務 Select services

- 管理系統1年質保期服務
1-year warranty period service for the management system.
- 管理系統維護年約: 系統維護、更新、遠程線上服務
Annual maintenance for the management system: system maintenance, updating and remote online service.
- 管理系統網頁租用: 提供客戶帳號密碼, 客戶登入網頁管理設備
Webpage rent of the management system: provide customers with account, password and customers can log on the webpage to manage equipment.
- 設備委托管理服務年約: 監控設備運行狀況、異常報警通知、維護保養通知, 維修費用另行報價
Annual equipment entrusted management services: monitor equipment operating conditions, abnormality alarm notice and equipment maintenance notice. Repair costs will be offered separately.

成功案例

SUCCESSFUL
CASES



多臺智慧水泵管理

某水質淨化廠

Management of several intelligent water pumps
The water purification plant in Huizhou

MBR 污水淨化管理系統

某化工廠

System for the management of MBR
sewage purification

The chemical plant in Jiaying



08



一體化污水處理設備管理

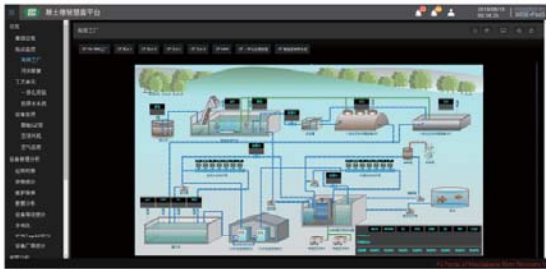
某製藥廠

可集中管理多臺一體化設備。

Management of integrated equipment for
sewage treatment

A customer from Shandong

Centralized management of several integrated equipment is possible.



雨水污水淨化回用管理系統 (海綿工廠)

雲平臺管理系統

工藝流程圖即時監控設備與水質狀態。

緩解防汛壓力、回收雨水污水再利用、確保污水零排放，減少自來水用量。

System for the management of rainwater and sewage purification and recycling

(sponge processing plant)the plant in Zhejiang Province

Management system based on cloud platform.

There is a process flow diagram to monitor the status of equipment and water quality in real time.

Flood control pressure is relieved, rainwater and sewage are recycled, zero discharge of sewage is ensured, and consumption of tap water is reduced.

河道水質監測管理

中控室SCADA管理系統

24小時監測河道水質

以溶解氧傳感器參數，自動控制曝氣機啟停，降低能耗。

持續追蹤水質變化情況，確保水質達標。

Monitoring and management of water quality in the river courses of Pinghu City, Zhejiang

System for the management of SCADA(Supervisory Control and Data Acquisition) in the central control room.

Water quality of the river courses is monitored 24 hours a day.

Start and stop of the aerator is automatically controlled with the parameters of dissolved oxygen sensor, so as to reduce energy consumption.

Change of water quality conditions is followed up continuously to ensure that water quality meets the standard.



GSD力助您成爲 物聯環境科技的領先者

GSD HELP YOU BECOME THE FRONT SUNNER IN
IoT ENVIRONMENTAL TECHNOLOGY

凝聚超過20年的水務設備與工藝經驗，GSD基士德推出操作容易、佈建快速的智慧水管理系統，提供符合水務運營需求的解決方案，爲客戶降低運維成本、提升水處理效率，爲環保行業帶來技術創新、爲改善地球生態做出更大貢獻。

With more than 20 years' experience in water equipment and process, GSD has launched the intelligent water management system featured by easy operation and rapid deployment to provide solutions that meet the needs of water operations. It will reduce the cost of operation and maintenance and improve the efficiency of water treatment for customers, bring technological innovation to the environmental protection industry, and make greater contributions to improving ecological environment.



基士德與其眾多合作伙伴共同打造智慧水管理系統
GSD and its partners jointly developed the intelligent water management system.



歡迎索取以下產品型錄



泵系列

沉水泵系列 | 陸上泵系列 | 特種泵系列



攪拌推流系列

攪拌機系列 | 推流器系列



供氧曝氣系列

曝氣機系列 | 曝氣盤系列 | 曝氣管系列



風機系列

三葉魯式鼓風機系列 | 增壓魯式鼓風機 | 沉水式風機 | 空氣懸浮離心鼓風機



污泥處理設備

帶式脫水機 | 廂式壓濾機 | 非金屬矩形刮泥機 | 淺層高效氣浮設備



智能化系列

EP6 物聯監控管理系統 | 空氣質量管理系統 | RS-485 傳感器



反應器及套裝設備

芬頓反應系統 | MBR生物膜反應器 | 預制泵站 | 一體化污水處理設備



耗材藥劑及相關設備

生物繩 | PAC 聚合氯化鋁 | PAM 聚丙烯酰胺 | 泡藥設備



股票代號:6641

英屬開曼群島商
基士德科技股份有限公司
臺灣分公司

GSD Technologies Co.,Ltd.
Taiwan Branch

環保設備和技術服務的專業伙伴

本型錄內容如有變更，恕不另行通知。

We reserve the right to change content without notice.

基士德科技股份有限公司版權所有 all rights reserved. CY-J9



www.gsd.net.tw